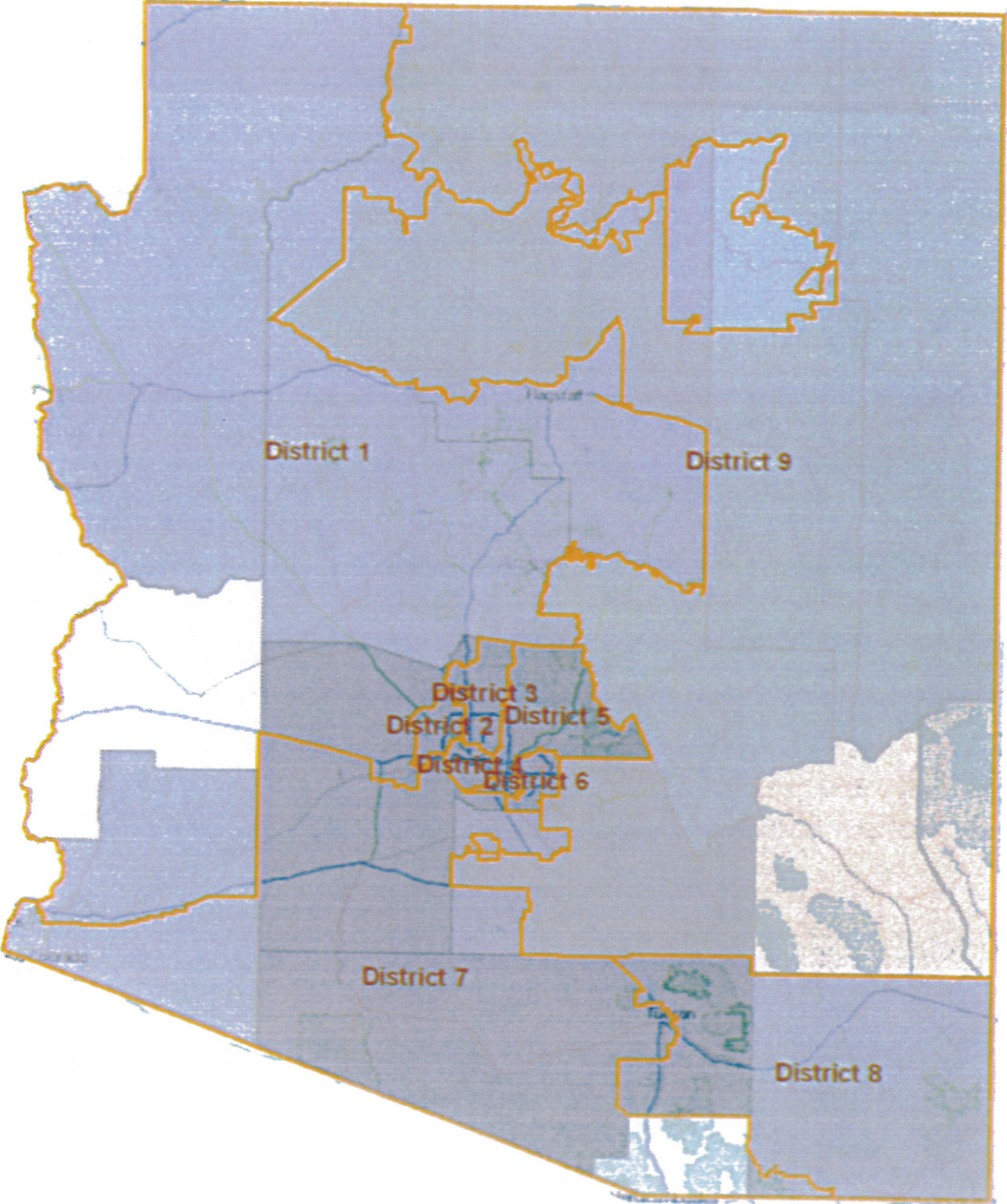


# Pinal County Governmental Alliance

## Congressional Map Proposal

### Districts One thru Nine



**Pinal County Governmental Alliance  
Congressional Map Proposal  
Districts One thru Nine  
Total Population**

District Number	Counties	Total
District 1	Coconino, La Paz, Maricopa, Mohave, Yavapai, Yuma	710,207
District 2	Maricopa	710,223
District 3	Maricopa	710,205
District 4	Maricopa	710,222
District 5	Maricopa	710,222
District 6	Maricopa	710,239
District 7	Cochise, Maricopa, Pima, Pinal, Santa Cruz, Yuma	710,224
District 8	Cochise, Pima	710,222
District 9	Apache, Coconino, Gila, Graham, Greenlee, Maricopa, Navajo, Pinal	710,253

**Pinal County Governmental Alliance  
Congressional Map Proposal  
Districts One thru Nine  
Majority Minority Districts  
Hispanic/Latino**

District Number	Counties	Total Population	Total Voting Age Population	Voting Age Population - Hispanic/Latino	Percentage	Majority Minority (>=50%)
District 1	Coconino, La Paz, Maricopa, Mohave,	710,207	555,466	83,004	15%	No
District 2	Maricopa	710,223	532,469	101,463	19%	No
District 3	Maricopa	710,205	540,574	84,610	16%	No
District 4	Maricopa	710,222	478,374	273,855	57%	Yes
District 5	Maricopa	710,222	562,096	89,215	16%	No
District 6	Maricopa	710,239	513,510	82,583	16%	No
District 7	Cochise, Maricopa, Pima, Pinal, Santa	710,224	505,764	270,680	54%	Yes
District 8	Cochise, Pima	710,222	561,206	107,437	19%	No
District 9	Apache, Coconino, Gila, Graham, Greenlee,	710,253	513,544	98,356	19%	No

**Pinal County Governmental Alliance  
Congressional Map Proposal  
Districts One thru Nine  
Voter Registration Numbers**

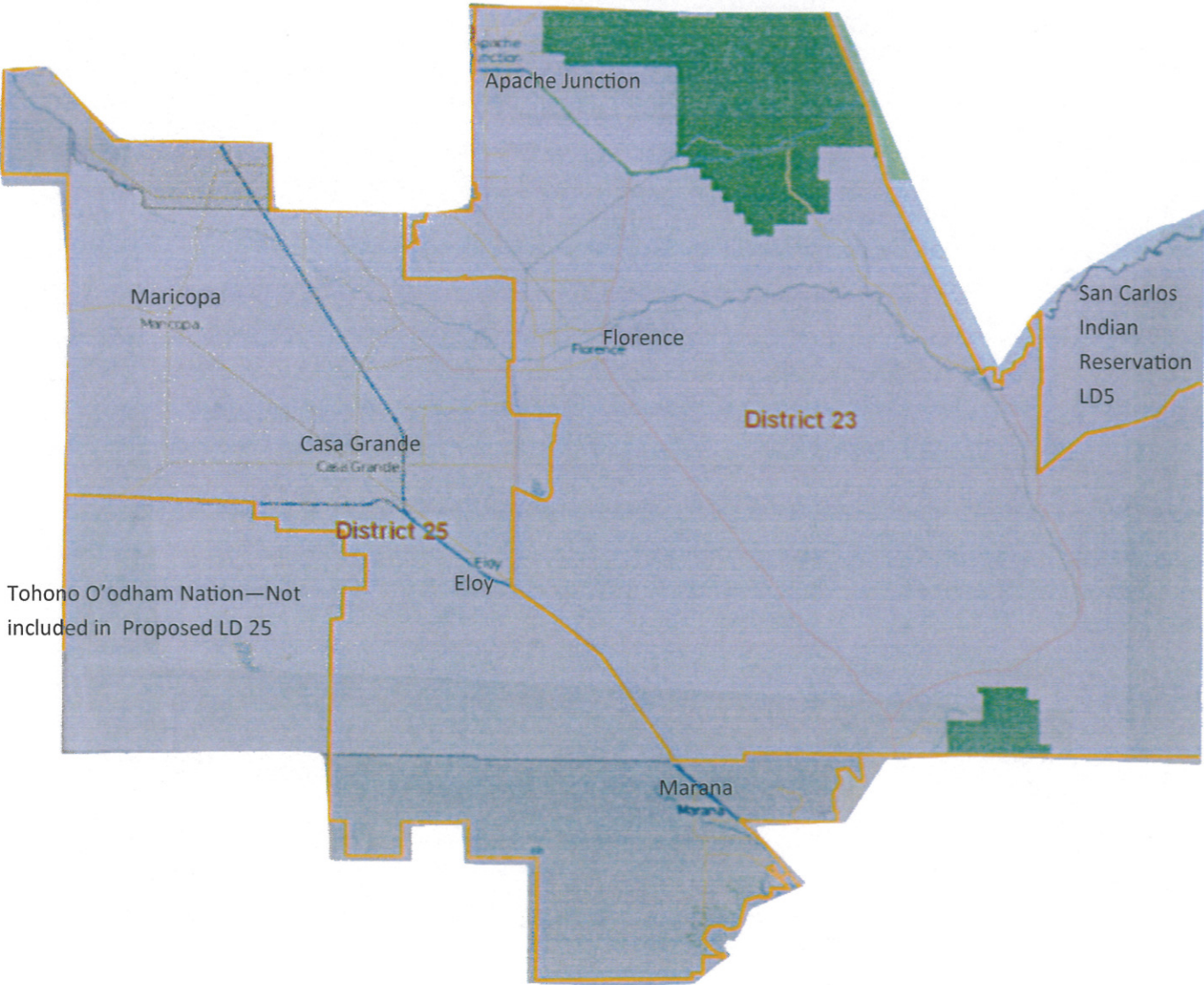
District Number	Counties	R	D	O	Total
District 1	Coconino, La Paz, Maricopa, Mohave, Yavapai, Yuma	152,000	101,000	130,000	383,000
		40%	26%	34%	
District 2	Maricopa	150,000	105,000	122,000	377,000
		40%	28%	32%	
District 3	Maricopa	159,000	106,000	125,000	390,000
		41%	27%	32%	
District 4	Maricopa	41,000	103,000	84,000	228,000
		18%	45%	37%	
District 5	Maricopa	151,000	113,000	137,000	401,000
		38%	28%	34%	
District 6	Maricopa	171,000	90,000	125,000	386,000
		44%	23%	32%	
District 7	Cochise, Maricopa, Pima, Pinal, Santa Cruz, Yuma	59,000	124,000	90,000	273,000
		22%	45%	33%	
District 8	Cochise, Pima	147,000	132,000	121,000	400,000
		37%	33%	30%	
District 9	Apache, Coconino, Gila, Graham, Greenlee, Maricopa, Navajo, Pinal	110,000	133,000	104,000	347,000
		32%	38%	30%	



# Pinal County Governmental Alliance

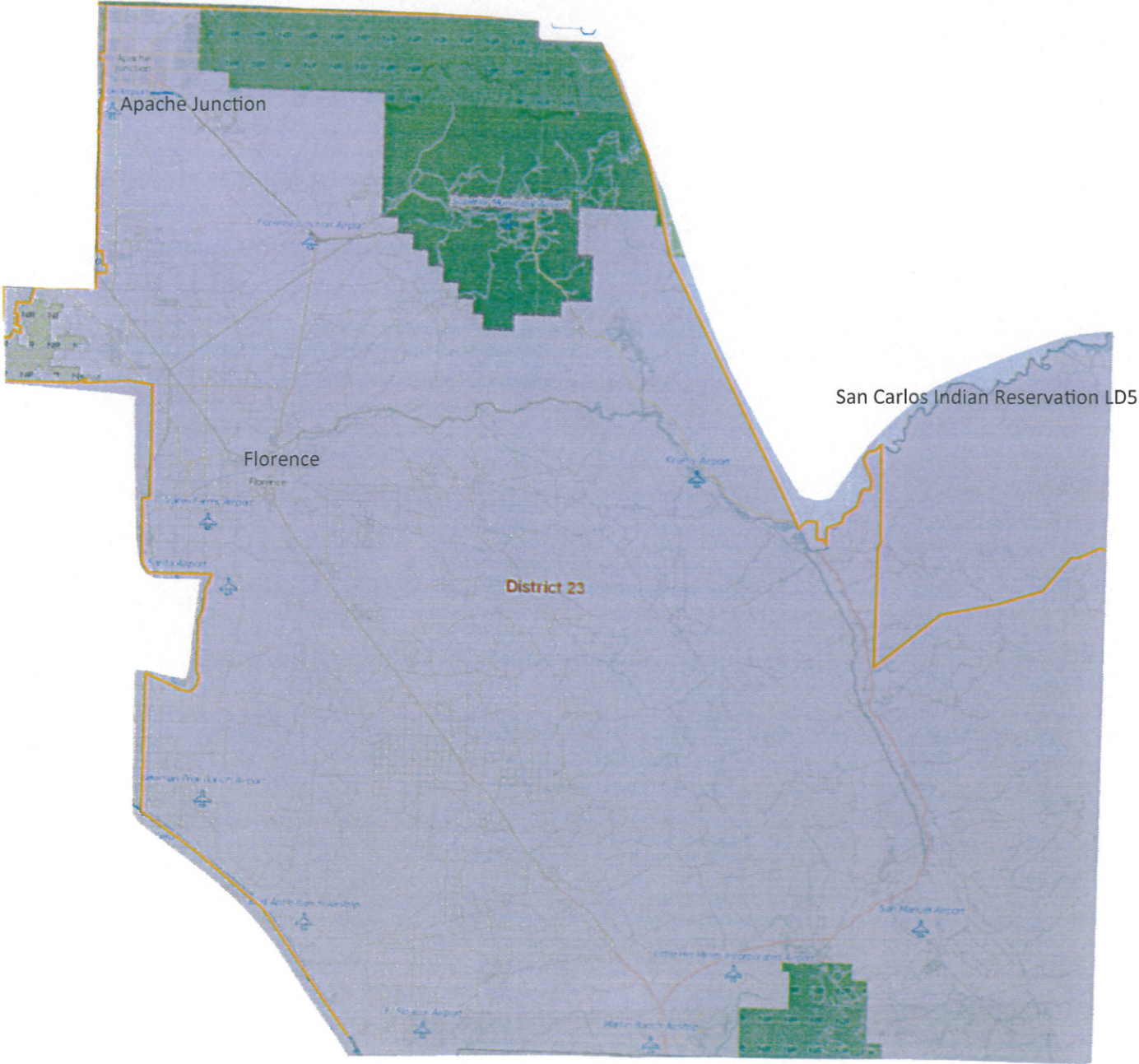
## Legislative Map Proposal

### Districts 23 and 25



# Pinal County Governmental Alliance Legislative Map Proposal

## District 23







**Pinal County Governmental Alliance  
Legislative Map Proposal  
Districts 23 and 25  
Total Population**

<b>District Number</b>	<b>Counties</b>	<b>Total</b>
District 23	Maricopa, Pinal	212,646
District 25	Maricopa, Pima, Pinal	212,266



**Pinal County Governmental Alliance**  
**Legislative Map Proposal**  
**Districts 23 and 25**  
**Voter Registration Numbers**

District Number	Counties	R	D	O	Total
District 23	Maricopa, Pinal	34,000	29,000	34,000	97,000
		35%	30%	35%	
District 25	Maricopa, Pima, Pinal	30,000	30,000	31,000	91,000
		33%	33%	34%	